

ADHD SUPPORT PATHWAYS

Outlining the resources available to help with different aspects of your and your family's journey with ADHD

PAEDIATRICS DEVELOPMENT
DOCTOR

CAMHS*

HEALTH

ADHD SUPPORT
PATHWAYS

SOCIAL

HOUSING
BENEFITS



TRANSPORT



FINANCIAL
SUPPORT

TUTORING

EDUCATIONAL
PSYCHOLOGIST



School
report

EHCP*



COUNSELLING

PARENTS
& CARERS

SUPPORT GROUPS

ACTIVITIES

YOUTH CLUB

BATTERSEA ZOO



DANCE CLASSES

DRAMA CLASSES

SENTALK - BRICK CLUB

*CAMHS = Children and adolescent mental health services
*EHCP = Education, Health and Care Plan
*WIASS = Wandsworth Information, Advice and Support Service

By Radhika Patel



PAEDIATRICS DEVELOPMENT TEAM

The paediatrics development team runs a specialist service where they assess, diagnose and manage the treatment of children with ADHD



NICE GUIDELINES

The National Institute of Clinical Excellence produce guidelines for best medical practice based on clinical evidence. They have produced guidelines on the diagnosis and management of ADHD which can be used by people with ADHD and their parents to better understand the medical care they should be receiving (1).



CAMHS

Children and Adolescents Mental Health Services (CAMHS) work to assess, diagnose and manage mental health conditions in children and adolescents. CAMHS can help manage many mental health conditions that may exist alongside the child's ADHD (2).



BLUE BADGE AND TRAVEL PASSES

Children with hidden disabilities such as ADHD can apply for a blue badge pass. Parents may find it easier to travel with the blue badge, especially if their child struggles with road safety or using public transport (3).



HOUSING BENEFITS

Parents who are unemployed, on low income or receiving benefits may be eligible to receive housing benefits and council tax reductions through the council (4).



FINANCIAL SUPPORT

Wandsworth Contact a Family – charity for families with disabled children with gives advice and helps with tasks grant and benefits applications (5)

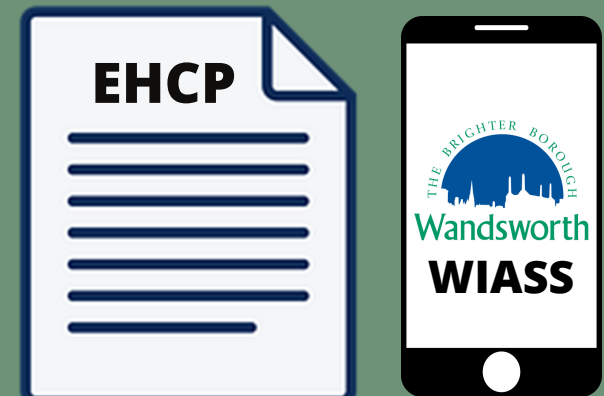
Disability Living Allowance – tax-free monetary benefit for parents with a child younger than 16 years old with a disability (6)

Family Fund – charity that offers grants for families on benefits who have a child with disabilities/complex needs (7)



SCHOOL AND SCHOOL REPORT

Schools can support children with ADHD by referring appropriate children for a needs assessment and well as completing a school report to aid in the diagnosis of ADHD. The school should also make reasonable adjustments to help support the child.



EHCP AND WIASS

The EHCP lays out the extra needs of a child when it comes to education, health and care. However, obtaining an EHCP can be a long process and services like WIASS can provide support and advice on how to obtain an EHCP (8)



EDUCATIONAL PSYCHOLOGIST

The school can refer children to an educational psychologist who can assess the child's development and advice the school and parents on any changes that can be made to support them both at school and home (9).



TUTORING AND HOME SCHOOL PLANS

Some parents may chose to support their child with private tutoring sessions. Some organisations may also create home school plans for parents who have decided to home school their children. This ensures that they have a varied curriculum at home (10).



**SEND
LOCAL
OFFER**

COUNSELLING

Organisations such as SEN Talk provide subsidised counselling to parents of children with SEND. Counselling is a good way to learn new coping strategies and improve wellbeing (11).

SUPPORT GROUPS

Support groups for parents of children with ADHD can provide a safe space to meet other parents who have experienced similar situations. Through regular meet-ups parents can connect and support each other (11).

SEND LOCAL OFFER

The Wandsworth SEND Local Offer outlines services available to children with SEND and their parents/carers. This includes family therapy, short breaks for respite and general support and advice (12).



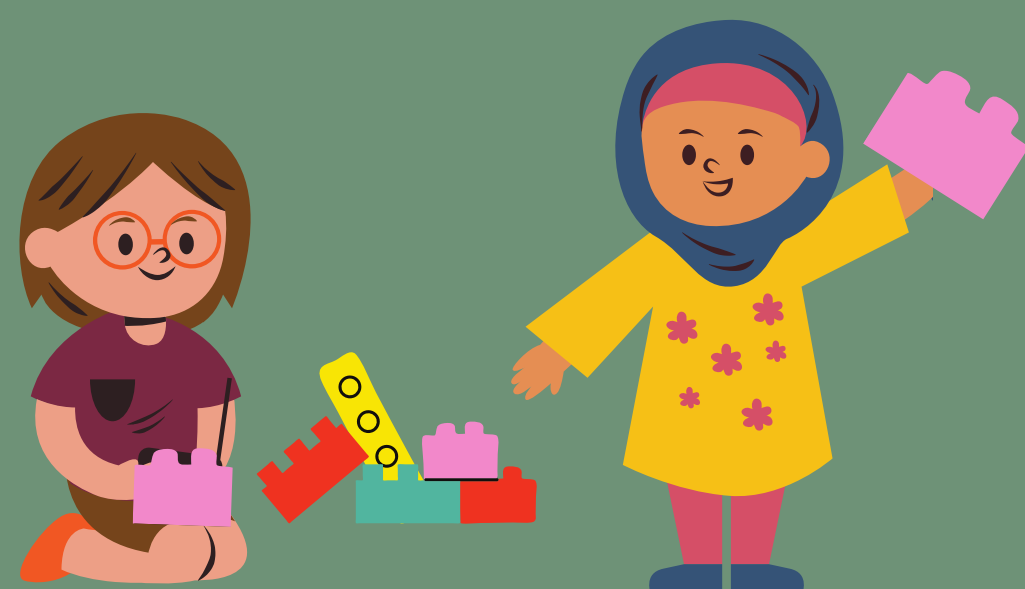
AND OTHERS ON THE LOCAL
OFFER WEBSITE!



The WAND card can be used as a form of ID by children (<16 years old) who have Special Educational Needs and Disabilities (SEND) and it offers discounted and free activities within Wandsworth

**WANDSWORTH'S
SEND LOCAL
OFFER (12)**

The Royal Academy of Dance hosts subsidised ballet classes for children with SEND aged 4-11



SENTALK - BRICK CLUB

The Brick Club is a place where children with ADHD and autism can learn to socialise and build confidence whilst playing with brick toys



There are a few youth clubs specifically for children with SEND in Wandsworth. This may provide a place to increase confidence and learn new social skills.



The Baked Bean Company has a youth drama and dance group for children with learning disabilities aged 12 to 19

References

1. Attention deficit hyperactivity disorder: diagnosis and management | Guidance | NICE [Internet]. Nice.org.uk. 2019 [cited 22 November 2021]. Available from: <https://www.nice.org.uk/guidance/ng87>
2. Guide to CAMHS [Internet]. YoungMinds. [cited 22 November 2021]. Available from: <https://www.youngminds.org.uk/young-person/your-guide-to-support/guide-to-camhs/>
3. Who can get a Blue Badge? [Internet]. GOV.UK. [cited 22 November 2021]. Available from: <https://www.gov.uk/government/publications/blue-badge-can-i-get-one/can-i-get-a-blue-badge>
4. Housing Benefit [Internet]. GOV.UK. [cited 22 November 2021]. Available from: <https://www.gov.uk/housing-benefit>
5. Contact - for families with disabled children [Internet]. Contact. 2021 [cited 22 November 2021]. Available from: <https://contact.org.uk/>
6. Disability Living Allowance (DLA) for children [Internet]. GOV.UK. [cited 22 November 2021]. Available from: <https://www.gov.uk/disability-living-allowance-children>
7. Family Fund [Internet]. [cited 22 November 2021]. Available from: <https://www.familyfund.org.uk/>
8. Requesting an Education, Health and Care (EHC) needs assessment | THRIVE Wandsworth [Internet]. Thrive.wandsworth.gov.uk. [cited 22 November 2021]. Available from: <https://thrive.wandsworth.gov.uk/kb5/wandsworth/fsd/advice.page?id=VpY3jHa0LDo>
9. Educational psychology: advice for parents [Internet]. Wandsworth Borough Council. [cited 22 November 2021]. Available from: <https://www.wandsworth.gov.uk/schools-and-admissions/schools-and-community-psychology-service/educational-psychology-advice-for-parents/>
10. Bright Heart Education [Internet]. Thrive.wandsworth.gov.uk. [cited 22 November 2021]. Available from: <https://thrive.wandsworth.gov.uk/kb5/wandsworth/fsd/service.page?id=aokA8r9jn-Q&familychannel=0>
11. Sen Talk [Internet]. Sen Talk. 2021 [cited 22 November 2021]. Available from: <https://sentalk.org/>
12. Wandsworth's SEND Local Offer [Internet]. Thrive.wandsworth.gov.uk. [cited 22 November 2021]. Available from: <https://thrive.wandsworth.gov.uk/kb5/wandsworth/fsd/localoffer.page?familychannel=2>