

george's news

Issue 19, July/August 2008

Newsletter for St George's, University of London



Special Issue

A review of the
year 2007-08

Your George's...

WELCOME to our special review of the year issue, looking back at all the achievements of the past academic year, and ahead to future challenges. We've packed a lot in – welcoming new courses, new discoveries and a new Principal. And opened the doors to some big changes around campus, with our ongoing refurbishments, a new Student Centre and the unveiling of the £17m Horton Halls. One topic has dominated the news agenda over the past six months, and here we take a look at the review into the institution's future.



Communications
Manager
Tamsin Starr

Contents

04 News in brief

Our round up of the latest news.

05 Review 2007-08: Building our future

A look at developments around campus.

06 Horses for courses

How our teaching is being transformed.

07 Show me the money

Find out what's in store with our financial forecast.

08 People: Heritage2Health

Theresa Nash explains how Heritage2Health is breaking down barriers within the community.

09 People: Thank you for the music

Paul O'Carroll looks back on the days of rock'n'roll, leather trousers and eye-liner.

10-12 Hitting the headlines

Our round-up of new staff, grants, publications, events and training.

Review of the year



The Strategic Options Review started more than a year ago in June 2007, shortly after the announcement of the previous Principal's departure.

PREVIOUSLY, St George's was faced with the reduction in research funding that followed the RAE in 2001 and an alteration in the criteria for widening participation funding that coincided with this.

The Review continues in the face of anticipated financial challenges – not least the potential impact of this year's RAE results on future funding and the effect of the looming economic downturn.

The Review is taking place against this background and discussions with the two potential partners, Surrey University and a consortium of Royal Holloway,

University of London, and Kingston University are centered on the following issues: Academic Excellence, Economic Sustainability, Governance, Quality Environment, Stakeholders and Practicalities.

“There are a wealth of opportunities for translational research of national and international standards”

In addition Surrey University identified Enterprise and Innovation as a separate strategic area.

In discussions with all potential partners, St George's will capitalise on its current location, especially the benefits of sharing a site with St George's Hospital Trust. The 500,000-strong, diverse population

of South West London offers a wealth of opportunities for translational research of national and international standards.

Groups of staff and students are continuing their 'fact finding' visits to the suitors over the summer, and

discussions on the proposals are ongoing with the University of London and HEFCE. Initial

findings will be presented to Council, Senate and Academic Forum at Extraordinary meetings arranged for September.

In the rest of this special issue, we take a look at the achievements of the past year, and the future for our Estates, Teaching and Finance. ■

Principal's column

I thought it would be helpful for this month's column to focus on the discussions we recently had at a joint meeting of SPARC and Senate. The meeting included reviews of the past academic year and a look forward to the next year. This is reported elsewhere in this edition. I will focus on providing an update on the Strategic Options Review and mention the exciting development of an Academic Health Sciences Network.

SGUL is presently in a strong position to determine its own future – what we must avoid is others making the decision for us. It is crucial for the Institution to maintain and grow its excellence in teaching, and reinvigorate its research income; research income has not kept up with that attracted by comparable institutions in recent years.

SGUL additionally needs to improve both its international reputation for its research, and its ability to recruit to certain key posts.

To ensure that a balanced and equitable approach is being taken to the two bids – Surrey University and a consortium of Royal Holloway, University of London, and Kingston University – we have engaged two independent external consultants for the project, namely Paul Mitchell (formerly Academic Registrar at Newcastle University) and Kathy Watkins (formerly Chief Executive, Newham University NHS Trust in east London). They are advising on the process that includes the analysis of the two proposals and accompanying the liaison groups on their visits to the universities. To underpin this balance, we have asked SGUL's internal auditors to review and provide assurance on the process.

Two liaison groups have been established to consider the proposals from the universities. Professor Sean Hilton is leading the Liaison Group for Surrey, and Professors Nigel Brown and Pat Hughes are leading the Liaison Group for RHUL/KU. There have been a number of meetings already that have addressed the issues of academic quality, economic



sustainability, quality environment and governance. These discussions have included matters related to the practicalities of the proposals and the engagement of our NHS stakeholders.

The Surrey University proposal is relatively straightforward, as there is

“It is crucial for the Institution to maintain and grow its excellence in teaching and research”

only one partner involved. The RHUL/KU proposal is more complicated, with SGUL becoming a separate arms-length organisation linked in via a shared academic strategy. Further consideration is being given to governance issues for both proposals by the respective liaison groups – the maintenance of SGUL's independence within a partnership remains a priority.

A number of issues that I'm sure concern us all were raised at the recent SPARC-Senate meeting. The future of the SWan Alliance was raised, particularly with regard to an alliance with Surrey University. I

confirmed SGUL's commitment to SWan. All agreed that our relationships with the NHS must be safeguarded – it is important for any potential partner to fully understand our close links with NHS partners and NHS London. It was also underlined that evidence of a

willingness and ability to invest in the Tooting campus must be shown – we have ambitious plans to develop our campus and we wish to see how any partner will support these.

I will continue to use my column in this newsletter and my blog to disseminate information on progress with the Strategic Options Review.

One of the major areas for discussion with potential partners will be the opportunities provided by a development of an Academic Health Science Network (AHSN).

The proposal for the AHSN has emanated from the proposals for Academic Health Science Centres in

other sectors of London, and the desire of the NHS community in South West London to do something different. From SGUL's point of view, it is important to demonstrate a real commitment to research, training and NHS service delivery in South West London.

St George's Hospital Trust (SGHT), the Mental Health Trust, Wandsworth PCT and SGUL have contributed funding for the appointment of a consultant, Sarah Fox, to undertake a feasibility study.

Ms Fox has met with 26 groups and/or people, and will be writing a report for consideration by stakeholders in September.

The model for SW London will differ from the AHSCs that are being developed by King's, Imperial, UCL and others in that it includes community and primary care, and incorporates health professional training and not exclusively research. This fulfils much more closely the NHS agenda launched by the Darzi Report.

The proposition has been discussed with NHS London and they are supportive.

A final, and important point, is for SGUL to strengthen its international links to take forward the concept of an Academic Health Sciences Network and we shall be pursuing contacts in North America, Europe and developing countries.

You will agree that these important issues have a crucial bearing on the future of St George's. I am keen to hear your views and encourage you to attend the Open Forum – the next one is on Tuesday 23 September – and respond to my blog.

I wish you all a restful and enjoyable summer – I am very grateful to you for your hard work and commitment to St George's. I look forward to a successful and prosperous new academic year.

Professor Peter Kopelman
Principal

News in brief

Student Experience Awards 2008

The Student Experience Awards panel has awarded a total of 15 grants to both staff and students to support an array of projects. It was a bumper year for applications, with regular gifts to the Annual Fund allowing the panel to give away over £30,000.

Many of the student projects funded showed a willingness to help others, both at home and abroad. For example, Spectrum, a student society working with children with physical, developmental and behavioural difficulties, was awarded £2,500 to fund training for members in safeguarding disabled children.

Staff also got in on the act by piloting projects to help students improve their skills. One such project is a Disability Awareness Day, open to all students, that is the brainchild of Paula Jean Manners in the Division of Mental Health.

For a full list of the projects funded, please contact Chris Conneely at chris.conneely@sgul.ac.uk

Students protest at funding cut

St George's students staged a protest outside St George's Hospital on 16 June, over loss of free accommodation that could leave junior doctors £5,000 worse off.

Around 70 students gathered to protest against the removal of free accommodation for doctors in their first year of training. The BMA calculates the loss of free accommodation to be worth £4,800.

Further to the campaign, the Welsh government has decided to keep accommodation free for first year doctors. The Students' Union is now urging students and doctors to write to their MPs on the issue. A second protest, involving 30 medical schools took place on 18 July in central London.

St George's leads European HIV fight

A "crack team" of scientists



A student volunteer helps out at a Spectrum event

combining both strands of HIV prevention research – vaccines and microbicides – is celebrating becoming the largest consortium of its kind in Europe.

Led by St George's Professor Robin Shattock, the Europrise network of universities, governmental research institutes and pharmaceutical companies has added seven new partners since its official launch in December, bringing the total to 39.

The network runs 23 HIV research projects, 14 clinical trials and funds 20 PhD studentships, across 22 European countries.

Professor Shattock said: "In the first year, Europrise has opened up new training schemes and funding opportunities in the fields of microbicides and vaccines, establishing itself as an international driving force in understanding the interface between these two technologies, pursuing a critical path to the development of effective HIV-1 prevention strategies."

New sports field deal for St George's

St George's has agreed a deal with the Metropolitan Police to use their facilities at East Molesey from 1 September 2008. The facilities at Imber Court provide some excellent pitches, initially for football, rugby and netball with the possibility of using the grounds for cricket, tennis and other sports.

Mark Bery, Director of Finance commented: "The facilities are of

excellent quality and we have agreed a two year deal, with a strong possibility of extension. We are very grateful to members of the Students' Union Executive, in particular Paolo Perella and Mike Dunne, for their assistance in this matter." The well equipped fields come with bar and catering facilities and are just a short walk from Thames Ditton station.

St George's has third highest retention rate in UK

St George's, University of London has the third lowest drop out rate of any higher education institution in the UK, the latest government figures show.

Key performance indicators published by the Higher Education Statistics Agency (HESA) in June revealed that 98.9% of first year students come back for a second year of study. This is the highest retention rate ever achieved by the institution, topped only by the Royal Academy of Music (100%) and the Royal Northern College of Music (99.1%).

Kenton Lewis, Head of Student Recruitment and Widening Participation said: "Our low drop-out rate reflects the welcoming and friendly environment at St George's and the support we offer students."

New Head of Joint Research Office to integrate operations

Paul Craven has rolled out his new plans as Head of the Joint Research Office for SGUL and the Trust.

Paul will focus initially on recruiting new staff to the Office, implementing revised procedures, and providing further guidance and advice for investigators. He is currently leading a review of the Office's internal procedures, aiming to integrate University and Trust functions where possible, to speed up and simplify processes. The proposed new procedures have been out for consultation with researchers in the SGUL and Trust, and should be in place by the end of July.

The aim is to respond to the increasing amount of excellent research undertaken in both University and Trust, and to provide an equally excellent service in the management and governance of this research.

St George's chooses supplier for new website

Suppliers are competing to win the contract to overhaul St George's external website. The Communications team is leading the re-design and re-build of the website, aiming to make it more up-to-date, attractive and easier to navigate. It is hoped that a new media agency will be in place from 1 August. The first stage of the project will involve scoping with key audiences. After completion of the external website, a second phase will look at improving the Portal. If you have any feedback on the website, please email your comments to media@sgul.ac.uk.

Web conferencing on trial

Feedback from trials of desktop web conferencing systems across SWan's three member sites has been overwhelmingly positive. Users love the fact that they can hook up with external colleagues from the comfort of their own office chair!

The SWan team is testing a number of alternative web conferencing systems. If you'd like to sign up for a free trial, please contact Dr Dave Rayner at d.rayner@kingston.ac.uk ■

Review: 2007-08

Past ~ Present ~ Future

We take a look at achievements over the past year and the challenges and opportunities that lie ahead from four perspectives: Estates, Registry, Students and Finance

Building our future

OVER the past academic year, Estates has been pushing forward, with a number of exciting projects completed and still more in the pipeline.

Horton Halls, the new £15.5 million student halls of residence, opened its doors in September. Now housing 332 students, the luxurious accommodation comes with en-suite bathrooms, roof-top common rooms, dishwashers and full TV and IT access.

In June, Site Services was moved from Hunter Wing to the Jenner Wing basement; now a vastly improved area for receiving and dispatching goods. From next month (August) purchasing supplies will also be housed there, leading to the centralisation of all supplies. Hunter Wing now also boasts a new, insulated roof, which will improve energy efficiency.

A complete refurbishment of the 4th and 5th floor is due to be completed by September. This includes integrating Academic Services so that all of Media Services can sit together in one

open-plan office. A new reception area will be created and the print room enlarged.

Students can now learn in a more user-friendly environment, thanks to seven new high-spec 'base', or problem-based learning rooms in the central core. The rooms are equipped with white boards, integrated screens and projector units, combination locked

storage cupboards and tea-making facilities.

In addition, two new 40-capacity computer rooms will be added to the fifth floor, each coming with brand new flat screen PCs, new furniture and air-conditioning.

The Robert Lowe Sports Centre is being upgraded over the summer, including re-roofing, and improving interior decoration. When the centre re-opens in late September, fitness fanatics should

expect to benefit from upgrades to the changing rooms and improved ventilation.

A number of developments are in the pipeline for the next academic year. From October, Medical Education will be expanded on the fourth floor, Hunter Wing. The print room, currently housed in the old Site Services area will be moved back

up to the fourth floor. This will allow the old Site Services, or Porter's lodge area to be converted into additional Registry space, with the same glass-fronted wall.

Category III labs in the Jenner Wing building will be updated and centralised in order to use the space more effectively.

Despite these positive developments, following the current refurbishment programme presents a number of challenges

for St George's. At present rate of funding, only 38% of Jenner Wing would be refurbished by 2015. In theory it would take a further 16 years to complete the whole wing. Anticipating that HEFCE funding is likely to be reduced after 2011, alternative funding methods are being considered.

For this reason, Estates are consulting on three main options for the future: continuing with current refurbishment programme, seeking additional funding, or re-focusing existing funding to turn D Block into a state-of-the-art research facility.

Following presentations to the Senate, SPARC and the Academic Forum, Estates is investigating the feasibility of proposed new designs. A laboratory space and a general space working group will be formed, allowing staff to ensure design solutions are practical and achievable. Staff will also be kept in the loop through a range of roadshows, displays, open forums and a web portal. ■

“Students can now learn in a more user-friendly environment”

Past~Present~Future

Horses for courses



IT'S been a bumper year for Registry with the launch of a number of new services and courses for our students.

The launch of the Student Centre in September streamlined services for students, giving them a 'one-stop-shop' for all their non-academic needs. Students can now do everything from handing in their coursework to paying their tuition fees and finding their local dentist, all in one place. Over the past year The Student Centre has expanded its services to include drop-in sessions for counselling, bookings

“We have transformed from a medical school into a healthcare university”

for careers advice and receipting for coursework hand-ins. It has also developed three new ways of providing information to students; the new Handbook, our ever expanding self-service Portal pages and our Discussion Forum.

September also saw the successful launch of the first full-time laboratory-based Masters in Biomedical Sciences. During the year an innovative new programme, the Postgraduate Diploma Physicians Assistant was validated, a course which will address

changing NHS workforce needs.

The academic year ended on a high, as new Principal, Professor Kopelman attended his first annual Presentation Ceremony on 23 June at the Barbican Centre. Nearly 2,000 family members, friends and academics attended the event, celebrating the achievements of the MBBS, BSc Biomedical Science, BSc Intercalated and Postgraduate graduands.

Challenges

St George's, University of London is changing. Over the past few years we have transformed from a medical school into a healthcare university. With less than half of our student intake now studying medicine, Registry is central in promoting and supporting the wide range of vocational courses involved in the creation of a professional multi-disciplinary team.

The ongoing increase in student numbers means it will be vital for Registry to use space more efficiently. At the moment, our sophisticated syllabus plus timetabling package is simply being used as a room booking system. However, we would like to move towards using the system to create teaching timetables based on the needs of each teaching session. In order to make the best use of space, we need to allow the system to allocate teaching sessions to rooms and time slots, so this will require greater flexibility from teaching staff.

A further challenge will be to

produce an interface between the student records database (SITS) and Syllabus Plus, which holds information on students' courses. This will enable us to produce individual timetables for students, thus offering them a better service, and to more easily provide the information required by government regulators.

Registry is working with project teams at Royal Holloway and

Kingston University to make sure that students on SWan (the South West London Academic Network) programmes can access the resources and facilities of partner institutions.

The project teams cover the areas of Student Records Management, Library and Disability and involve staff from each institution.

OUTGOING St George's Students' Union President, Paolo Perella offers the student perspective...

Achievements

This year's RAG raised around £80,000, including £12,000 donated to St George's Hospital Child Development Centre, which provides therapeutic care for children with special needs. Donations were also given to a range of national charities including Barnardo's, Mind, Winston's Wish, Cancer Research UK and the British Heart Foundation.

We're delighted to have found a new sports ground, after losing Cobham to Abramovic and his cronies at Chelsea FC. The Students' Union, particularly Mike Dunne, saved the day by negotiating use of Imber Court, the Metropolitan Police sports ground, where we hope to dominate university sport for the next two years at least!

We've created a stronger and more united image for the

Students' Union Sports Clubs by buying all clubs new kit...and what better colours to play in than the traditional school club colours: green and gold! As well as spending over £10,000 on kit for clubs, the Students' Union is now offering a whole new line of personal kit that will be available online from September.

Challenges

As our student survey showed, there are a number of issues which the student body feel are vital for our future such as our identity, location, relationship with the Trust, and remaining part of the University of London. I have been heavily involved in the 'Strategic Options Review' but regardless of what the review concludes, a challenge for my successor, Jack Sugrue, will be to ensure the points highlighted are used to guide our future. ■

Show me the money

AS the financial year 2007-08 draws to a close, we are confident of meeting our target surplus of £2.5 million, which is within the Funding Council's guidelines. Three main factors have led to this.

Firstly, we were awarded one of the highest funding increases in England (19.6%) from the Higher Education Funding Council for England (HEFCE) for 2007-08. We have achieved a similar feat for 2008-09, with the institution due to receive £28.5m – another ten per cent increase. This was double the increase received by any Russell Group university, and substantially higher than the average increase, which was three per cent.

Secondly, although research volume decreased, the move towards including overhead costs (fEC or full Economic Costs) as part of funding bids has meant that there is a greater contribution to the costs of running the Institution. Thirdly, the award of Additional Student Numbers and the recent introduction of variable fees are resulting in increased tuition fees.

Our most recent forecast is predicting surpluses over the next five years. Even taking a number of potential risk factors into account, we are hopeful that we will continue to achieve surpluses.

However, as a small institution we are particularly vulnerable to changes in the external environment, so there are a number of risks and challenges we'll be keeping a close eye on over the next few years.

We are monitoring our student numbers very closely as growth in student numbers is crucial to our long-term financial stability. Now that we've broadened our teaching focus beyond medicine, it's important that we promote ourselves effectively to potential students. If we do not recruit our Additional Student Numbers we face a claw back of grant funding from the Funding Council.

“Our most recent forecast is predicting surpluses over the next five years”

If our income from charitable sources for research continues to decline we face also losing HEFCE Charity Support, which amounts to some £3m for next year and partly compensates for not gaining the full costs of undertaking research from charity funders. We therefore need to maximize funding from sources that pay full Economic

Costs, such as the research councils.

We are waiting for the results of the RAE (Research Assessment Exercise) and the new methodology for government funding of research under the REF (Research Excellence Framework), as this could alter the funding landscape for future years.

Internally, our Research Strategy is currently under review and is

paramount to our financial sustainability. We will be supporting the future direction of this strategy by collecting information on the proportion of research grants we win against applications and “horizon scanning” funding

opportunities. We will also be reviewing our sources of funding and calculations for overhead contributions.

A review of our Enterprise Strategy will also ensure we benefit from “third stream” activity and pursue consultancy opportunities to the maximum.

We hope to get a robust methodology in place for TRAC (Transparent Approach to Costing) reporting, which produces a breakdown of the costs of research, teaching and other activities. This data is crucial as it is needed for annual reports to HEFCE and also heavily influences government policy on funding to the sector. ■



Heritage 2Health

It's not often that students get a chance to put their skills to use in the community. But thanks to the dedication of Theresa Nash, Principal Lecturer in Primary Care Nursing in the Joint Faculty of Health and Social Care Sciences, St George's and Kingston students have been doing just that.



HERITAGE2HEALTH was conceived in 2005, following involvement with the WestFocus health network. "We wanted to develop a cross generational wellbeing project," Theresa said, "Evidence suggests that wellbeing is closely linked to active participation in society."

Heritage2Health brings together people of all ages and abilities, to break down the barriers that prevent people from being involved in their community. "We wanted to find a new inclusive way to work with people who are vulnerable or isolated; people who may feel excluded due to lack of support or understanding," Theresa explains. "Heritage2Health supports access to environments that, in themselves create wellbeing."

The initiative creates a link between the skills of thousands of students and staff, and the vulnerable people they could work with in their local communities.

With the help of the English Heritage and National Trust it has come to life. Theresa said: "Students have a unique opportunity to get to know people with a disability in a social setting, breaking down traditional barriers of age, disability, and culture to learn together." Away from a clinical setting, typical professional boundaries can also be broken

"Students have a unique opportunity to get to know people with disability in a social setting"

down. "Heritage2Health has been supported by many people contributing their talents – not just students, but academic and administrative staff volunteers, participants and the heritage sector."

Now in its third year of events, Heritage2Health has proved itself to be popular not only with students, but with local people who have

benefited from the events. "My friend Pat, who is 92, thoroughly enjoyed herself [at the Heritage2Health event in June]." Senior Research Fellow Dr Ann Gallagher said. "It gave her a much needed outing and an opportunity to meet people of all ages."

This is an experience shared by many of the participants at this year's event, held at the beautiful

setting of Ham House and Marble Hill House in Richmond. A packed day of activities saw 59 participants undertake a range of challenges including a three mile river walk, a ferry crossing, creating art with local artist Beci Ward, and learning about the history of the venues.

Split into seven teams, each led by a student from George's or Kingston, the participants ranged in

age from two to 92, with a range of health and learning disabilities and their carers. Groups focused on sharing and enjoying the challenge activities, rather than focusing on restrictions individuals may have.

"The students were amazing," Theresa says, with obvious pride. "They were involved in planning the event with participants, recruiting and fund raising. They accepted the challenges and were flexible and friendly which helped to create such a memorable experience for everyone on the day."

Previous years have seen students and staff help groups tackle climbing Glastonbury Tor and visit Stonehenge and Stourhead in Wiltshire. Work is now underway to secure funding for the future with a view to launching a new network organisation. Students are keen to set up their own Heritage2Health society to further host events locally and to build on this success. ■

Thank you for the music

IF you've ordered a new laptop, desk or chair you might be familiar with Paul O'Carroll's friendly voice at the end of the phone. But you probably didn't guess that 20 years ago he was the heavily made-up, leather-trouser-clad lead singer of a New Romantic band.

Paul O'Carroll, Purchasing and Assets Administrator for the Joint Faculty of Health and Social Care Sciences, is known among his colleagues for his sense of humour. "I like to make people laugh," he says. "I'm quite childish."

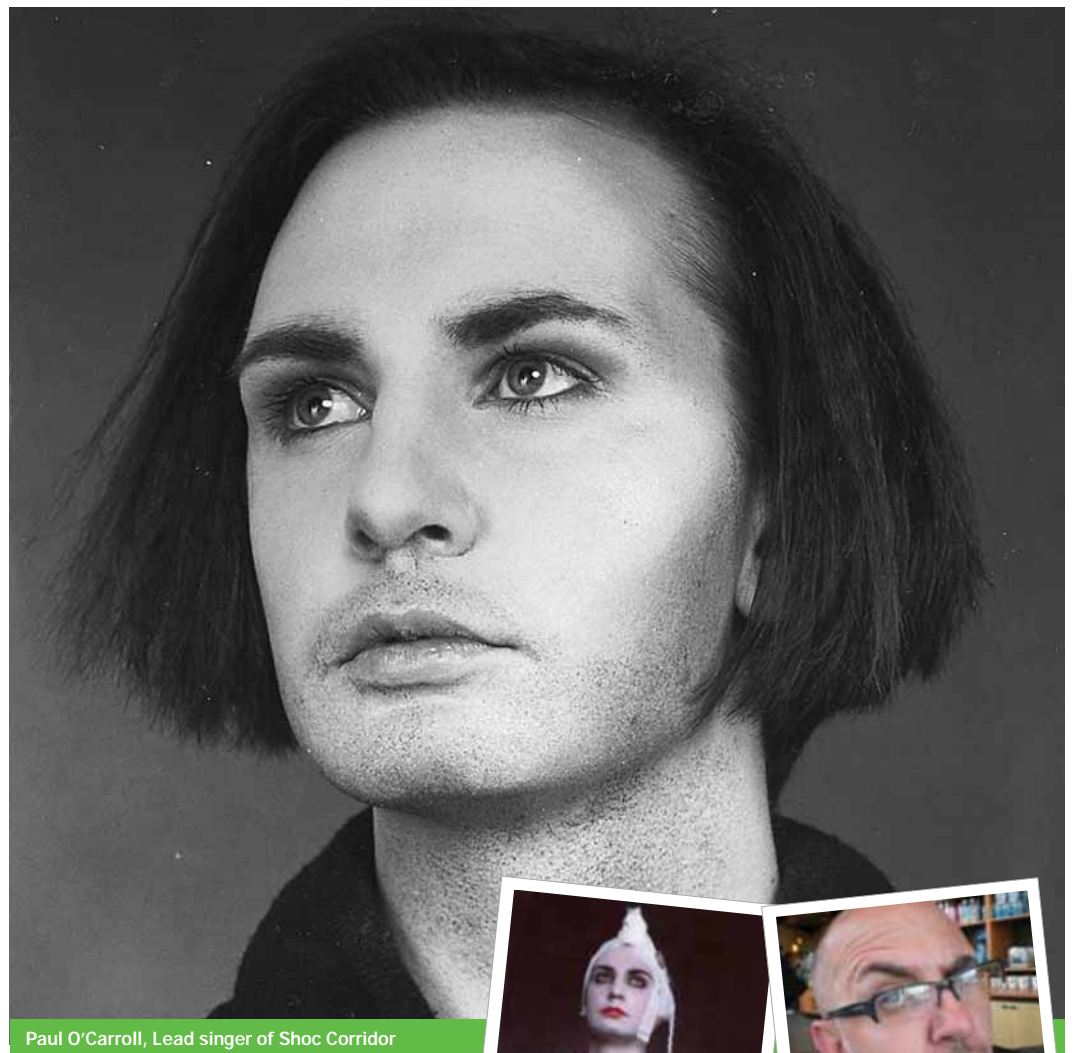
He's been in his current role for seven years, which involves purchasing anything from computers to furniture and project managing building projects and office moves for the 250-strong Joint Faculty.

"It's a very varied job," he says. "I could be dealing with anyone from the Dean to cleaners on a daily basis...It all starts with me making plans and getting people together to make decisions."

"I was hailed as 'the new Jim Morrison'"

It's a far cry from the heady New Romantic scene Paul found himself at the centre of 20 years ago. Paul had been playing in bands since the age of 17, but it was in 1983 that he met Andy, Chris and Nogi at Kensington Market, who came together to form 'Shoc Corridor'.

The band got signed by independent record label, 'Shout Records', with whom they recorded three singles and two albums. With Paul as lead singer, Shoc Corridor played a number of well-known venues across London, including Dingwalls and the Marquee! They also toured Israel, where Paul was hailed as the 'new Jim Morrison' by a national newspaper.



"I think this was probably based on the volume of my voice," he jokes. "Well, maybe the hair and leather trousers too!" In 1984, the band recorded a single with Steve Harley from Cockney Rebel, which was played by Terry Wogan on Radio 2 and John Peel on Radio 1. Unfortunately this was not enough to propel the band into the top 40, although seeking stardom had never been the band's primary motivation.

In 1984, Shoc Corridor split following the deaths of two band



members. Paul moved away from singing to playing bass guitar in a number of indie bands. In the early 1990s he found himself in the pop world once again, this time working in art direction for music videos for the likes of Kim Wilde, Genesis and Texas.

Despite leaving the world of

professional pop, Paul hasn't lost the music. He's currently working on a DVD soundtrack for Heritage2Health and continues to play bass guitar and do "the odd bit of karaoke". He keeps up with the latest sounds by going to see "bands that people have never heard of". ■

People

Honours and achievements

St George's mixed doubles tennis team won the London University Hospitals Mixed tennis league on 16 July. This result follows a very successful year for the team, having won the men's doubles UH cup and Mixed UH one day tournament. The team consists of James Wicker (captain), Iain Sim, Paul Cameron, Sarah Morris, Vicki Scott and Rachael Campbell.

Suzie Key's second year SSM dissertation 'Genetically Modified Plants and Human Health' has been published in this month's 'Journal of the Royal Society of Medicine'.

Terry Poulton received the Innovators Award for his extraordinary vision in bringing together the Electronic Virtual Patients (eVIP) programme to develop a shared bank of virtual patients from across Europe. www.virtualpatients.eu.

Professor Hamid Ghodse, has published a new book entitled 'International Drug Control into the 21st Century'. A United Nations Executive Director described the book as "a timely and topical book from one of the world's leading drug control experts."

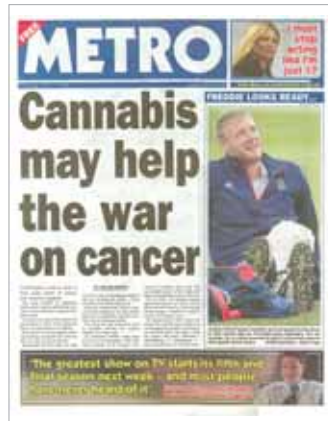
Dr Maksym Harhun, Research Fellow in the Division of Basic Medical Sciences, was a runner up in the British Heart Foundation's annual science image competition. The award was presented on 25 June by Vivienne Parry, a Radio 4 presenter.

PhDs and MDS

Stephen Lo, MD May 2008
Nasal carbon monoxide: Its biological role and involvement in normal and inflamed states.

Grainne Nicholson, MD April 2008
Osteocalcin and the perioperative hormonal inflammatory and metabolic response to elective hip replacement and to pelvic reconstructive surgery following major trauma.

Hitting the headlines



• Cannabis may help the war on cancer

Dr Wai Man Liu, Division of Cellular and Molecular Medicine, St George's, University of London hit the front page of the Metro on 17 July following a press release highlighting his research into the use of cannabis in cancer therapy, sent out by St George's Press Office.

The research, led by Dr Liu in collaboration with colleagues at St Bartholomew's Hospital, London, shows that cannabis has the potential to slow down tumour growth and prevent the reproduction of cancer cells.

• Contraceptive coil could cut cancer risk

The Mail on Sunday reported that a form of the contraceptive coil may prevent cancer of the uterus in high-risk patients. Professor Shirley Hodgson, Professor of Cancer Genetics at St George's, University of London is leading the four-year trial on 220 women, in collaboration with Queen Mary, University of London.

• For the full stories and more, see the Communications Portal page.

New publications

Mrs Gillian Colville. (2008) The psychological impact on children of admission to intensive care. Elsevier. The Paediatric Clinics of North America.

CL Dakin, CA Wilson (CDS, BMS), I Kallo, CW Coen, DC Davies (BMS). (2008) Neonatal stimulation of 5HT2 receptors reduces androgen receptor expression in the anteroventral periventricular nucleus and sexually dimorphic preoptic area European J. Neurosciences 27: 2473-2480.

Cates CJ, Jefferson TO, Rowe BH. Vaccines for preventing influenza in people with asthma. Cochrane Database Syst Rev 2008;CD000364.

Harris TJ, Victor CR, Carey IM, Adams R, Cook DG. Less healthy, but more active: Opposing selection biases when recruiting older people to a physical activity study through primary care. BMC Public Health 2008; 8:182.

Kerry S, Markus H, Khong T, Doshi R, Conroy R, Oakeshott P. Community based trial of home blood pressure monitoring with nurse-led telephone support in patients with stroke or transient ischaemic attack recently discharged from hospital. Trials 2008; 9:15.

Oakeshott P, Hunt GM, Kerry S, Strauss DJ, Shavell RM, Reynolds RJ. Survival and mobility in open spina bifida: Comparison of results from the United States and the United Kingdom. Int J Disabil Hum Dev 2008; 7:101-106.

Owen CG, Newsom RS, Rudnicka AR, Barman SA, Woodward EG, Ellis TJ. Diabetes and the Tortuosity of Vessels of the Bulbar Conjunctiva. Ophthalmology 2008; 115:e27-e32.

Rudnicka AR, Owen CG, Richards M, Wadsworth ME, Strachan DP. Effect of breastfeeding and sociodemographic factors on visual outcome in childhood and adolescence. Am J Clin Nutr 2008; 87:1392-1399.

Carpes M, Mayer F, Simon K, Jardim J, Garrod R. The Brazilian Portuguese version of the London Chest Activity of Daily Living scale for use in patients with chronic obstructive pulmonary disease. J Bras Pneumol 2008;34(3):143-51.

Cornforth P. A grandiose vision of nursing threatens to lead to lower standards of patient care. Nursing Times 2008;104(3):12.

Cornforth P. Beware - pharmaceutical company

reps bearing gifts. Nursing Times 2008;101(25):18.

Cornforth P. Patients may delay going to A&E for fear of being made to do an HIV test. Nursing Times 2008;103(24):12.

Ellison G, Outram SM. An interdisciplinary perspective on the impact of genomics on the meaning of 'race', and the future role of racial categories in biomedical research. NTM Journal of the History of Science, Technology and Medicine 2008;16:378-86.

Greenwood N, Mackenzie AE, Cloud G, Wilson N. Informal carers of stroke survivors-factors influencing carers: a systematic review of quantitative studies. Disability and Rehabilitation 2008;1-21 (epub)

Greenwood N, Mackenzie AE, Cloud G, Wilson N. Informal primary carers of stroke survivors living at home - challenges, satisfactions and coping: A review of qualitative studies. Disability and Rehabilitation 2008;1-15 (epub)

Harris R, Kelly D, Hunt J, Plant H, Kelley K, Richardson A, Sitzia J. Accessing elite nurses for research: reflections on the theoretical and practical issues of telephone interviewing. Journal of Research in Nursing 2008;13(3):236-48.

Iliffe S, Manthorpe J, Warner J, Drennan V, Goodman C, Rait G, Kharicha K. Making progress in psychosocial research in dementia. Dementia 2008;7(2):167-74.

Jones F, Mandy A, Partridge C. Reasons for recovery after stroke: a perspective based on personal experience. Disability and Rehabilitation 2008;30(7):507-16.

Jones R. Self-Directed Support: Watching out for the Pitfalls. Journal of Integrated Care 2008;16(1):44-7.

Lam D. Cognitive behaviour therapy: a practical guide to helping people to take control. April 2008 ed. Routledge; 2008. (Book)

Lindsay J. Education in Political Conflict: Dilemmas, opportunities, obstacles and achievements in training Palestinian social care workers and social workers. In: Ramon S, editor. Social Work in the context of Political Conflict. Birmingham: Venture; 2008. (Book chapter)

Longfellow E, May S, Burke L, Marks-Maran D. 'They had a way of helping that actually helped'. A case study of a peer-assisted learning scheme. Teaching in Higher Education 2008;13(1):93-105.

Lugg GR, Ahmed H. Nurses' perceptions of metformin-resistant Staphylococcus aureus: Impacts on practice. British Journal of Infection Control 2008;9(1):8-14.

May S, Gay J, Atkins N, Marks-Maran D. Preparing potential teachers for the transition from employment to teacher training: A evaluative case study of a Maths Enhancement Course. Journal of Vocational Education and Training 2008;60(2):149-58.

Redfern S. Commentary on Humphreys A, Johnson S, Richardson J, Stenhouse E, Watkins M (2006) Evaluating the effectiveness of nurse, midwife/allied health professional consultants: a systematic review and meta-synthesis. Journal of Clinical Nursing 2008;17(9):1251-3.

Smart A, Tutton R, Ashcroft R, Martin P, Balmer A, Elliot R, Ellison, GTH. Social inclusivity vs. analytical acuity? A qualitative study of UK researchers regarding the inclusion of minority ethnic groups in biobanks. Medical Law International 2008;9(2):169-90.

Smart A, Tutton R, Martin P, Ellison GTH, Ashcroft R. The standardization of race and ethnicity in biomedical science editorials and UK biobanks. Social Studies of Science 2008;38(3):407-23.

Smith E, Ross F, Donovan S, Manthorpe J, Brearley S, Sitzia J, Beresford, P. Service user involvement in nursing, midwifery and health visiting research: A review of evidence and practice. International Journal of Nursing Studies 2008;45(2):298-315.

Vernon S, Ross F. Participation in community exercise classes: barriers to access. British Journal of Community Nursing 2008;12(2):89-92.

Watt B, Ponto M. Challenges of empowering older people with type 2 diabetes: A review. Journal of Diabetes Nursing 2008;12(2):74-8.

Ghodse H, International Drug Control into the 21st Century: Ashgate Publishing July 2008

People

Welcome



Dr Axel Nohturfft joins us as a senior lecturer in the Basic Medical Science Division. Axel will be working in the area of research in cell

and molecular biology, specifically on different aspects of membrane biogenesis. Axel can be contacted on anohturf@sgul.ac.uk.



Luke Woodham is a new Technical Developer on the PREVIEW project, within the e-Learning Unit. Luke will be implementing the

'Virtual Patients' project in Second Life, a 3-D virtual world, which aims to enable collaborative problem-based learning for distance learning courses. Luke can be contacted on lwoodham@sgul.ac.uk, or ext 6305

Kenton Lewis wins award for higher education progression

KENTON Lewis, Head of Widening Participation and Student Recruitment, has won the London Education Partnership Award for 'Individual Contribution to Higher Education Progression'. The award was presented at a Gala dinner at the Science Museum on 17 June.

This is the second year that St George's has won an award. The e-Learning Unit also received a special mention for their work supporting local colleges. Kenton hopes to use the prize money to fund an exchange with an Australian University for student mentors on the Junior Doctors programme.

Kenton says: "This is a wonderful recognition of a number of year's successful work and really reflects the work of the whole team." ■



Kenton Lewis receives the London Education Partnership Award

Grants

BHF - Utility of natriuretic peptides in patients with atrial fibrillation undergoing direct-current cardioversion or those requiring rate-control. Professor A John Camm and Professor G Sagnella. (Co-applicants) - **£149,305**

BHF - Investigation into the activation mechanisms of novel protein kinase C-dependent TRPC channel proteins in vascular smooth muscle cells. Professor William Large and Dr Anthony Albert. (Co-applicants) - **£226,078**

EC - Fighting Aneurysmal disease. Dr Gill Cockerill - **€582,000**

NIHR Service Delivery and Organisation Programme
Interprofessional team-work across stroke care pathways: outcomes and patient and carer experience. Dr Ruth Harris, Dr Geoff Cloud, Prof Fiona Ross, Prof Lalit Kalra (King's College London), Sally Brearley, Nan Greenwood, Prof Ann Mackenzie, Dr Fiona Jones, Dr Mark Joy (Kingston University). (Co-applicants) - **£427,978**

St George's Hospital Charity
Effect of lifestyle measures on acid exposure in Barrett's Oesophagus. Dr K Alexandropoulou. - **£7,528**

New Staff

Administration

Miss Y Ayton-George – Small Groups and Placement Coordinator
Ms C Cornwell – Strategic Partnership Programme Manager (SWAN)
Dr P A Craven – Head of the Joint Research Office

Basic Medical Sciences

Miss G Ariaratnam – Technician
Miss R S Collinson – Research Assistant
Dr D Szuts – Senior Lecturer in Biomedical Sciences
Dr A Nohturfft – Senior Lecturer in Biomedical Sciences

Cellular & Vascular Sciences

St George's Hospital Charity

Serum prognostic Markers for small vessel disease and lacunar stroke. Dr Atticus Hainsworth. - **£10,400**

St George's Hospital Charity

The role of inflammation and structural remodeling in atrial fibrillation following cardiac surgery. Dr A Kourliouros, Professor M Jahangiri and Professor AJ Camm. (Co-applicants). - **£23,520**

St George's Hospital Charity

Susceptibility to colonisation and infection with *Staphylococcus aureus* - a combined proteomic and micro-array approach. Dr Jonathan

Miss S Febrey – Study Co-ordinator
Miss M Edwards – Project Manager
Mr T James – Stroke Database Administrator

Dr M L Willson – Stud Co-ordinator

Cellular & Molecular Medicine

Miss G Van Roey – Research Technician
Dr D Waldron – Bioinformatics Scientist/Database Curator

Centre for Medical and Healthcare Education

Ms A L Spatz – Lecturer in Clinical Communication
Mr L Woodham – Technical Developer (PREVIEW)

Lambourne, Professor T Harrison, Dr J Lindsay and Dr G Coulton. (Co-applicants) - **£115,497**

University of London Central Research Fund

"A study of the initiation and development of the follicle transcriptome in the human ovary" - funding for Agilent whole human genome microarray kit and RNA amplification and labelling kits. Dr Suman Rice. - **£115,497**

Unipath - Longitudinal Assessment of Serological Biomarkers in patients with stable coronary heart disease. Professor Juan Carlos Kaski. - **£100,000**

Mrs I Kissne-Torok – Postgraduate Administrator

Clinical Development Sciences

Mr A Sreekantan-Nair – Research Assistant

Community Health Sciences

Ms G Favarato – Statistician

Faculty of Health and Social Care Sciences

Miss L Cole – Research Associate

Mental Health Sciences

Dr K Dyer – Senior Research Fellow
Dr J Erskine – Lecturer
Dr L Kindness – Research Assistant

University of London Central Research Fund

"Does TACE cause the shedding of endothelial ACE2 and contribute to lung Inflammation?"
Dr James Moffatt.

Wellcome Trust - IgA immunotherapy of tuberculosis. Dr Rajko Reljic (SGUL), Juraj Ivanyi, (KCL-Guy's), Jenny Woof (University of Aberdeen). (Co-applicants) - **£132,000**

Wellcome Trust - Impact of prevaron on the burden of disease due to Otitis Media in children in the UK. Dr Mike Sharland, Dr Paul Heath and Dr S Saxena. (Co-applicants) - **£180,000**

Listings

Exhibition In The Gallery In The Lanesborough Restaurant

Exhibition: until 04/08/2008,
7 days a week 7.30 am – 7.45 pm
The Gallery, The Restaurant, First Floor,
Lanesborough Wing

This exhibition showcases new prints (etchings, monoprints, wood-cuts etc) by members of the East London Printmakers Collective. For more information please contact Catherine Wilson on cwilson@sgul.ac.uk

STAR (Student Action for Refugees) Summer Scheme 2008

16/08/08 – 31/08/08, Tooting Scouts Hut
The STAR summer scheme provides local refugee children with exciting trips and activities in and around London. This year the scheme is based at Tooting Scouts hut, with activities ranging from arts and crafts and swimming to day trips to Brighton, zoos and parks.

STAR is looking for enthusiastic staff and students to volunteer either for the whole two weeks or for selected days. If you are interested please contact starsgul@gmail.com

WestFocus Bright Futures Course

3/09/08 – 05/09/08, Marylebone Campus, University of Westminster

Develop your enterprising spirit! You and your ideas are the heart of Bright Futures - an intensive and challenging three- day programme for students who aspire to more.

Please Visit www.westfocus.org.uk/ entrepreneurship for more details.

Cardiovascular Research Group seminar series

10/09/08, 1pm - 2 pm; Lunch from 12.30pm
John Parker Lecture Theatre,
Atkinson-Morley Wing

Dr Kausik Ray from the University of Cambridge will discuss "Large scale population studies of coronary heart disease: past, present and future." A full program is available at: www.cardiovascular-research.co.uk

To book contact Atticus Hainsworth at ahainsworth@sgul.ac.uk

Principal Open Forum

23/09/08 12.30pm, Michael Heron Lecture Theatre, 1st Floor, Hunter Wing

Do you want to have your say on our ambitious Estates plans or find out the latest on the Strategic Options Review? Don't rely on corridor chatter – find out at the September Open Forum!

Email your questions for the Principal to media@sgul.ac.uk or ask them directly on the day.

Microcirculation Conference September 2008: Microcirculation Abnormalities in Vascular Disease - Scientific Principles and Clinical Significance

25/09/08-26/09/08

Michael Heron Lecture Theatre, 1st Floor,
Hunter Wing

This meeting for physicians, scientists and surgeons is presented by the Cardiovascular Research Group and chaired by Professor JC Kaski and Professor Peter Mortimer. There is no registration charge for SGUL St George's Hospital staff. A full program is available at



The Mayor of Wandsworth talks to Professor Julian Ma in the HIV research labs

NEWLY elected Mayor of Wandsworth, Councillor John Farebrother, enjoyed a tour of the University and research facilities on June 19. He was greeted by Principal Kopelman, and was introduced to Deputy Principal Sean Hilton and Director of Administration John Duffy.

The tour began with a hands-on demonstration of taking blood on one of the mock wards. Student Union President Paolo Perella explained to the Mayor how important

these practice sessions are for students. Councillor Farebrother, who supports the St George's Hospital Charity, was also shown teaching facilities, and the Students' Union.

The new Mayor was also invited to tour the HIV research labs, and the plant rooms on the roof. St George's is at the cutting edge of research in the HIV field, and the exciting research being pursued here was introduced by Professor George Griffin and Julian Ma who directed the exploration of the labs. ■

www.cardiovascular-research.co.uk

To book, contact Carrie Victor-Smith on victors@sgul.ac.uk or call 020 8725 5939

Hypertension for Nurses

30/09/08, 9 am – 4.30 pm, Blood Pressure Unit, Ground Floor, Jenner Wing

This is an update for nurses on the importance of high blood pressure, its causes and prevention. It covers investigation, treatment with and without drugs, treatment of different conditions and cardiovascular risk factors, BHS/NICE guidelines and A, C, D algorithm. Speakers include SGUL's Professor Graham MacGregor, Professor DG Beevers and Professor NR Poulter.

There is a registration fee of £50, including refreshments. For further details, please contact Nirmala Markandu on tel 020 8725 2849.

Cycling End to End of Britain for Local Sufferers of Stroke

First year GEP students James Houston and Edward Mew will cycle over 1000 miles from John O'Groats to Land's End (JOGLE) from this summer. They aim to raise £2000 for a new speech rehabilitation machine at the Acute Stroke Unit (William Drummond Ward) at St Georges.

To sponsor them please visit www.justgiving.com/jamesandedsjogle or email m0700554@sgul.ac.uk.

Tobacco Free Initiative Course for a group of clinicians from the Middle East

Until 01/08/08

The International Centre for Drug Policy (ICDP) at St Georges, University of London is delivering

a comprehensive two-week training program on tobacco-free initiatives for senior medical practitioners and senior advisors from the World Health Organisation's Eastern Mediterranean Region Fellowship Unit.

On the final day of the course, participants will present on how they intend to incorporate knowledge gained on this course into National Tobacco Free Initiatives in their countries.

For more information contact Christine Goodair on cgoodair@sgul.ac.uk

WIN a George's bear



Congratulations to Jennifer Poyser, Educational Progress Project Manager, the winner of the June competition. She goes home with a George's bear!

For a chance to win a bear this month, just answer these questions based on stories in this month's George's News:

- Which rock legend did the Israeli press compare Paul O'Carroll to?
- According to the Higher Education Statistics Agency (HESA), what percentage of first-year SGUL students come back for a second year of study?
- What is the name of the new Head of the Joint Research Office?

Email your answers marked a), b) and c) to media@sgul.ac.uk with the 'competition' in the subject line. **Good luck!**