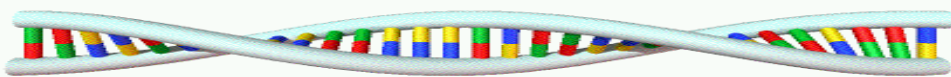


May 2009

Newsletter 15

**UK Stroke  
Genetics  
Group**

# Stroke Genetics Newsletter A DNA Resource for Lacunar stroke



## Over 500 patients recruited!

It's been a little while since the last study newsletter so what's been happening with recruitment over the past 7 months?

The new year began well as patient recruitment picked up with February (18 patients recruited) being the second highest recruiting month so far since the beginning of the study (highest being January 2008; 22 patients recruited).

New sites Torquay and Southend recruited their first patients to the study and Liverpool and Broadgreen, Barts and the London, North Cumbria, Blackpool and Stockport have all been set up and are ready to go.

Yeovil have been the highest recruiting site over the past 7 months, recruiting 13 patients in that time and being very quick to send in all of the data once recruited.

Leeds are still in the lead in terms of overall recruitment with a total of 83 patients recruited.

Thanks goes out to all the sites though that have recruited patients and are working hard to recruit patients to the study.

Keep up the good work!

**Chief Investigator:**  
Hugh Markus

**Study Coordinator:**  
DNA – Sam Febrey  
Tel: 020 8725 5374

**Contact:**  
St. George's  
University of London  
Cranmer Terrace, London  
SW17 0RE  
Fax: 020 8725 2950

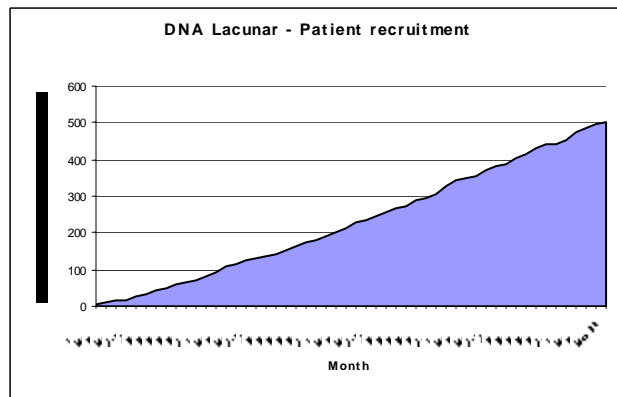
**Email:**  
strokegenetics@sgul.ac.uk



### In this issue:

DNA	
Recruitment update	1
Control update	1
Study extension	2
Contracts	2
Outstanding Information	2
Invoices	2
Blood tube expiration	3
Recruitment table	3
Sites in set up	3

Recruitment  
**504—Patients**  
**1628—Controls**



Control recruitment has been excellent recently.

Nottingham are within 50 of the 500 target which is brilliant. Aberdeen have recruited almost 100 just this year and are nearing the 300 mark.



The PCRN have taken hold of the control recruitment for Cambridge and are doing a sterling job setting up clinics at GP surgeries within the area. A mention most also go out to Manea surgery who's clinics have recruited 133 out of the 429 total recruited for Cambridge. Your help has been much appreciated

It would be great to finish control recruitment by the end of this year!

### Study extension

Many of you may be aware that recruitment to the DNA Lacunar study was due to finish at the end of this year. However, as recruitment is slower than expected the study is due to be extended for an extra 2 years. This means that recruitment will now finish on 31/12/2011.

The ethics committee have been informed of this change but as the only amendment is the recruitment period this is not considered a substantial amendment and therefore approval is not needed.

Each site should inform their R+D department of this extension and if you need us to provide confirmation of this, please let me know.

So with two and half years remaining, in order to reach the target of 1100 we need to be looking to recruit 20 patients per month. With the continued efforts of the current sites along with completion of the sites in set up and with interest still coming in for new sites to join the study, this target is still achievable. We can do it!

For tips and assistance with recruitment please do not hesitate to contact us

### Contracts



Many sites subcontracts have expired or are due to expire shortly. Our R+D department are in the process of producing a new contract which will supersede the current contracts. These should be ready shortly and soon as they are, they will be sent out for signing. For the interim, we have been assured that the contracts that you have in place are fine.

### Site invoices

If you have been sent information on patients that you can be reimbursed for, please send the invoices to me as soon as soon as possible so that these can be sent for payment

### Outstanding data and case review

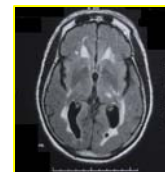
- Many sites are very quick to send through data once a patient has been recruited which is ideal and responses to outstanding data are positive. This has allowed us to review more cases.
- We will be feeding back to each site with the outcome of the cases that have been reviewed so far with details of those that have been classed as ineligible.

Number of cases recruited	Number of cases with outstanding data	Number of cases reviewed	Definite cases	Probable cases	Ineligible cases
504	54	436	301	75	60

- To reiterate a point made in the last newsletter; as of October 2008, cases will only be uploaded to the UKCRN website once they have been reviewed and deemed eligible. This data therefore may not appear on the database the month the patient was recruited, depending on whether there is outstanding data and whether the case has been reviewed.

# Stroke Genetics Newsletter

## A DNA Resource for Lacunar stroke



### Blood tubes



Please check your supply of yellow ECACC tubes as some are due to expire at the end of June.

Please discard of any that have expired in a sharps bin and let me know if you require a further supply



Distribution of sites participating in the study.

Blue indicates sites set up

Red indicates sites in set up or looking into setting up

### Recruitment Table

UK01 – Southern General, Glasgow	21	UK16 – St George’s Hospital, London	67	UK34–St Peter’s	0
UK02 – Western Infirmary, Glasgow	28	UK17 – Mayday, London	5	UK36 – West Herts, Watford	5
UK03 – Western General, Edinburgh	13	UK18 – Stoke Mandeville, Aylesbury	13	UK37– Blackpool	0
UK04 – Freeman Hospital, Newcastle	2	UK19 – William Harvey, Ashford	8	UK38 – Airedale, Skipton	3
UK05 – Leeds General Infirmary	83	UK22 – Frenchay Hospital, Bristol	0	UK39 – Countess of Chester	20
UK06 – Hope Hospital, Manchester	5	UK23 – Charing Cross, London	1	UK41 – Royal Cornwall, Truro	2
UK07 – Aintree Hospital, Liverpool	20	UK24 – Royal Hallamshire	1	UK42 – Derriford Hospital, Plymouth	7
UK08 – Walton Centre, Liverpool	12	UK25 – Royal Bournemouth	5	UK43–North Cumbria	0
UK09 – City Hospital, Nottingham	25	UK26 – Royal Aberdeen	2	UK46–Barts and the London	0
UK10 – Glenfield Hospital, Leicester	6	UK27 – St Helier’s, Carshalton	8	UK50–Preston	6
UK11 – Addenbrooks Hospital, Cambridge	36	UK29–Royal Sussex, Brighton	9	UK80–Southend	4
UK12 – Radcliffe Infirmary, Oxford	3	UK30 – Royal Devon and Exeter	16	UK81–Stockport	0
UK13 – Institute of Neurology, London	14	UK31 – Luton and Dunstable	21	UK83–Torquay	3
UK 14 – King’s College, London	3	UK32 – Yeovil , Somerset	21	UK85–Broadgreen and Liverpool	0
UK15 – Guy’s and St Thomas’, London	6	UK33 – Lewisham, London	0	<b>Total</b>	<b>504</b>

### Sites in set-up

Guildford	Medway	Bristol Uni	Portsmouth
Broomfield	Sunderland	Taunton	Frimley Park
St Mary’s	Wansbeck and Tyneside	Barnsley	East Surrey
North Staffs	Eastbourne	Chesterfield	Chichester
Southport and Ormskirk	Doncaster	Derby	University Hospital Coventry & Warwickshire NHS Trusts
York	Cumberland		

Please thank all your research team on our behalf for helping us obtain the current DNA Lacunar recruitment figures